

FOR LEASE

Call for Details

9 E Main St, Emmitsburg, MD

MacRo
LTD.
COMMERCIAL REAL ESTATE



Prime Space for Lease in Office Building in Downtown Emmitsburg

This 6,501 SF three-story property is situated in Emmitsburg, MD. Each floor can be leased separately or jointly. This prime corner spot has great space potential for private offices, a conference room, and a waiting room. The building features a private bathroom, kitchen area, lots of windows, and a private parking lot located in the rear of the building. The location is easily accessible and has excellent roadside visibility. Conveniently located close to US-15, and near restaurants, retail, and schools.

PRESENTING

Location: 9 E Main St, Emmitsburg, MD 21727

Legal: Tax Map 008C, Parcel 1782

Zoning: Frederick County: The Village Center District (VC) is intended to reinforce and enhance the historically mixed-use areas within rural communities and designated growth areas. The district provides for the location of a variety of limited commercial uses and a range of housing types while maintaining the compatibility of new development with existing development through design standards. A mix of uses is encouraged in the village center, either within a single structure or as separate uses located throughout the district.

Property Details:

- 6,501 SF three-story building
- Private bathroom
- Kitchen area
- Space potential for offices, conference room, waiting room
- Ample surface parking lot behind building

Utilities: Public water and sewer

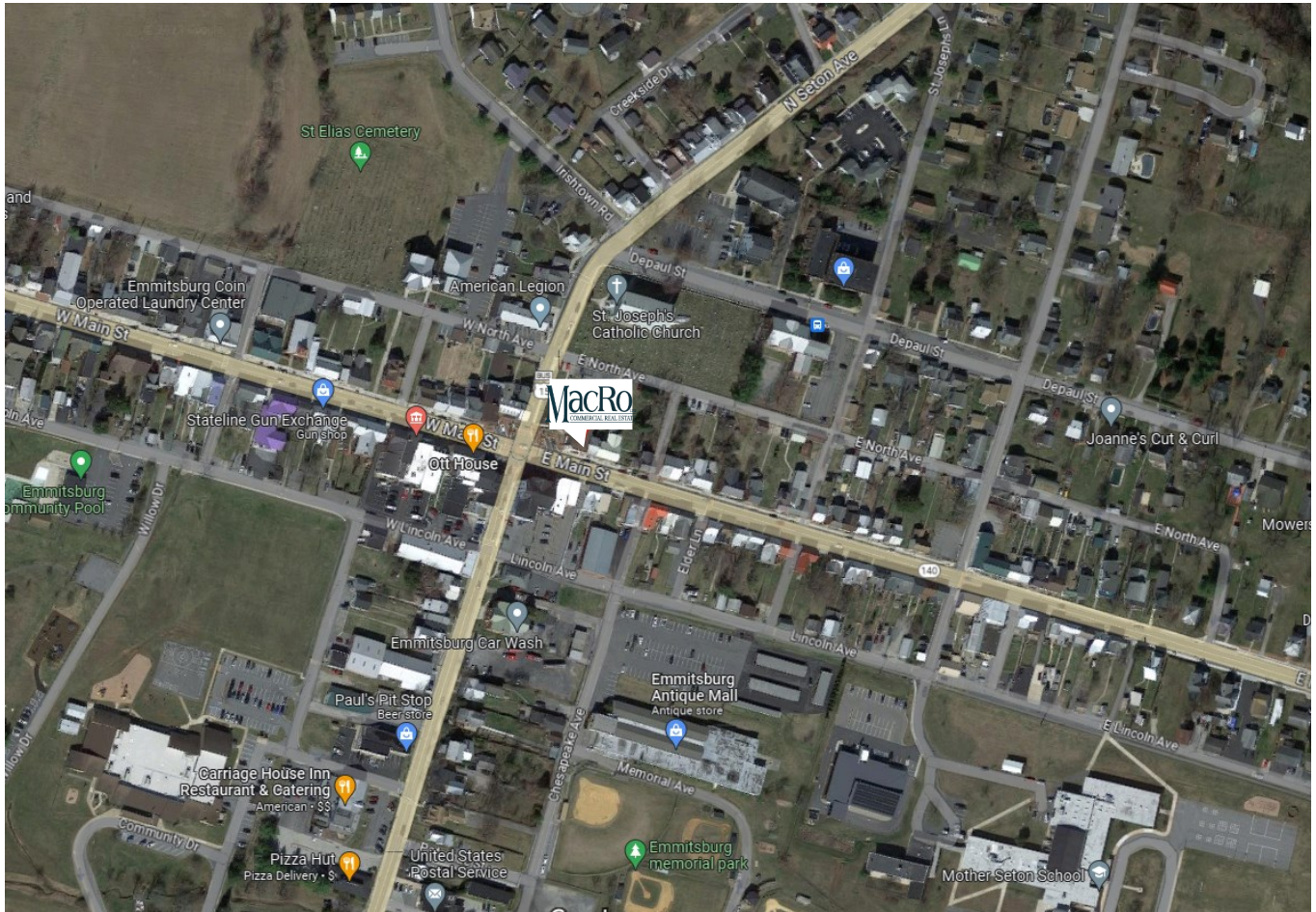
Contact: Jackie McGaughey, Sales and Leasing Associate
Office: 301-698-9696 ext. 207
Mobile: 301-606-0565
Email: jackie@macroltd.com

Disclaimer: Information obtained from sources deemed to be reliable. However, we make no guarantee, warranty or representation. Information, prices, and other data may change without notice.

LOCATION MAP

MacRo^{LTD.}
COMMERCIAL REAL ESTATE

FOR LEASE 9 E Main St, Emmittsburg, MD



Disclaimer: Information obtained from sources deemed to be reliable. However, we make no guarantee, warranty or representation. Information, prices, and other data may change without notice.

AERIAL

MacRo^{LTD.}
COMMERCIAL REAL ESTATE

FOR LEASE 9 E Main St, Emmittsburg, MD

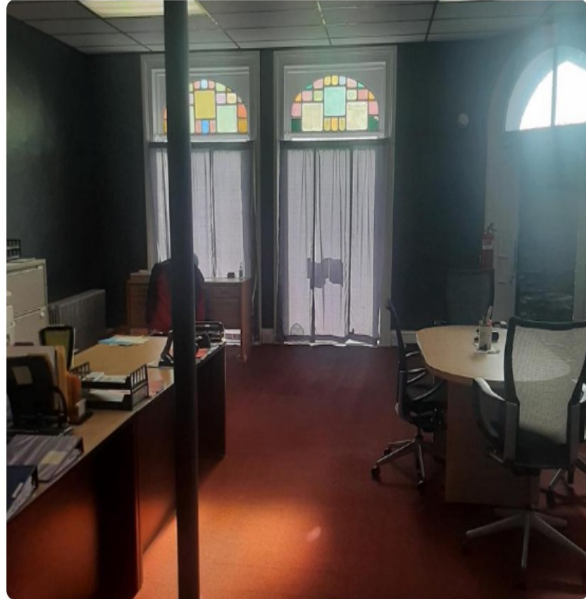


Disclaimer: Information obtained from sources deemed to be reliable. However, we make no guarantee, warranty or representation. Information, prices, and other data may change without notice.

PHOTOS

FOR LEASE 9 E Main St, Emmittsburg, MD

MacRo^{LTD.}
COMMERCIAL REAL ESTATE



Disclaimer: Information obtained from sources deemed to be reliable. However, we make no guarantee, warranty or representation. Information, prices, and other data may change without notice.

PHOTOS

MacRo^{LTD.}
COMMERCIAL REAL ESTATE™

FOR LEASE 9 E Main St, Emmittsburg, MD

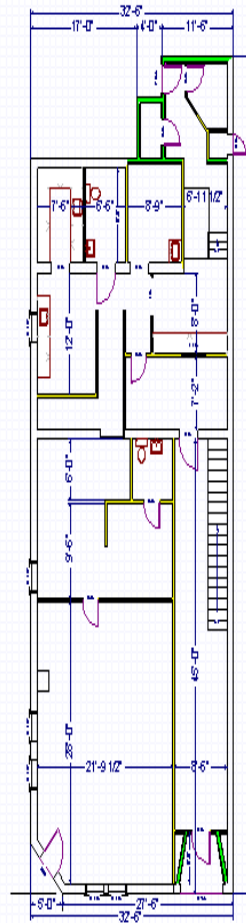


Disclaimer: Information obtained from sources deemed to be reliable. However, we make no guarantee, warranty or representation. Information, prices, and other data may change without notice.

First Floor

FOR LEASE 9 E Main St, Emmittsburg, MD

MacRo^{LTD.}
COMMERCIAL REAL ESTATE™



7-9 MAIN AVE.
FIRST FLOOR

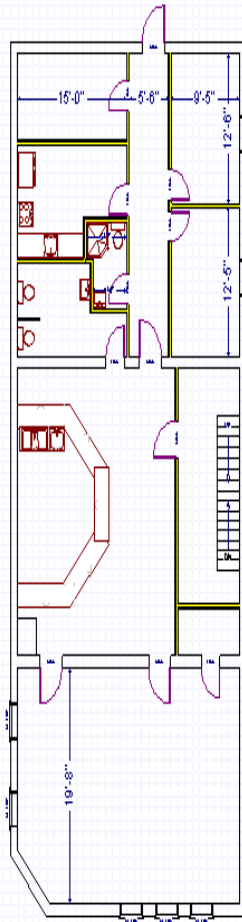
LIMITING AREA
2438 sq ft

Disclaimer: Information obtained from sources deemed to be reliable. However, we make no guarantee, warranty or representation. Information, prices, and other data may change without notice.

Second Floor

FOR LEASE 9 E Main St, Emmittsburg, MD

MacRo^{LTD.}
COMMERCIAL REAL ESTATE



7-9 MAIN ST.
SECOND FLOOR

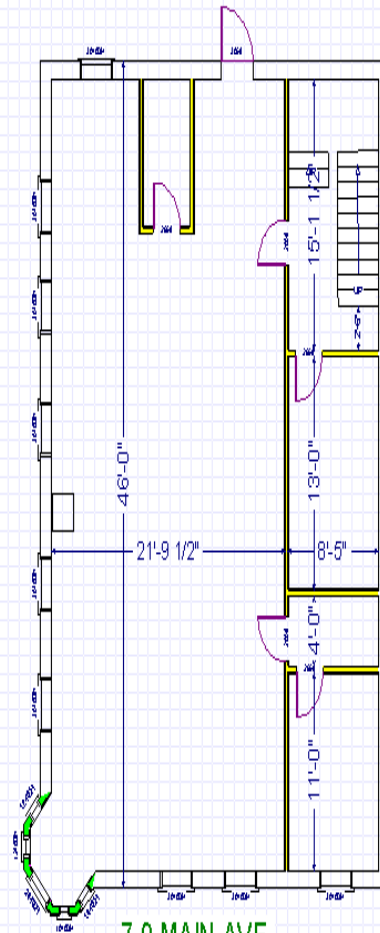
LIVING AREA
2355 sq ft

Disclaimer: Information obtained from sources deemed to be reliable. However, we make no guarantee, warranty or representation. Information, prices, and other data may change without notice.

Third Floor

MacRo^{LTD.}
COMMERCIAL REAL ESTATETM

FOR LEASE 9 E Main St, Emmittsburg, MD



7-9 MAIN AVE.
THIRD FLOOR

LIVING AREA
1064 sq ft

Disclaimer: Information obtained from sources deemed to be reliable. However, we make no guarantee, warranty or representation. Information, prices, and other data may change without notice.